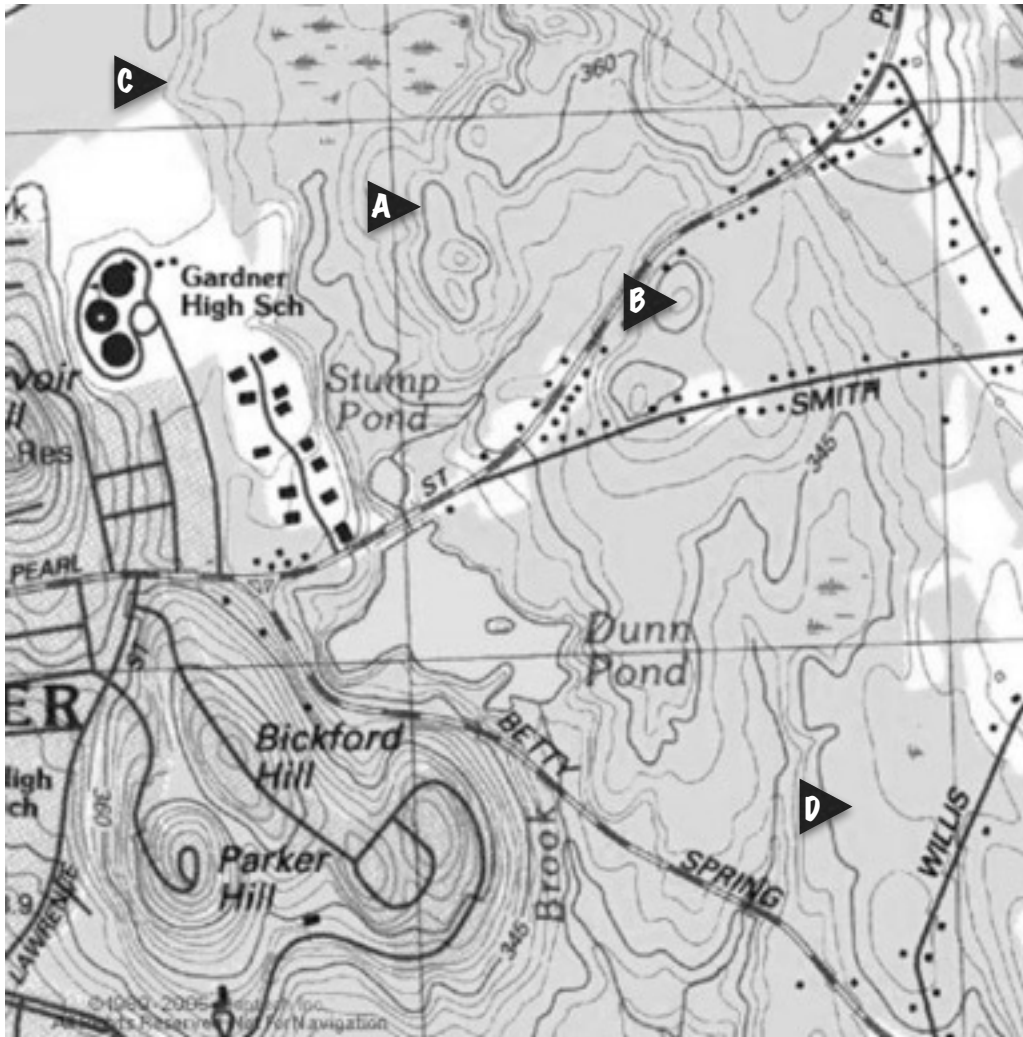


Interpreting Topographic Maps

Name: _____ Date: _____

Group: _____ Section: _____

This map shows Dunn State Park in Gardner, Mass. The contour interval is 3 feet. The scale is 1:24,000.



1) Label the points on the map:

A)

B)

C)

D)

2) What is the highest elevation on the map? How did you find it?

3) Which location has the flattest land area? How did you find it?

4) Which location is the steepest area? How did you find it?

5) What is the elevation of Dunn Pond? How do you find it?